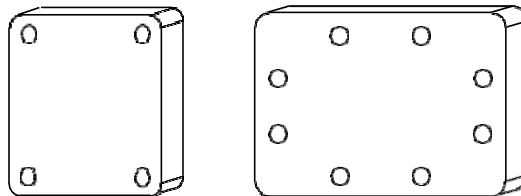


15 Waveguide Short

Vector Telecom offers a standard product line of waveguide short plates which provide high reflection short circuits for terminating all standard waveguides. Vector Telecom offers a cover, all-clear configuration as a standard product. Alternate materials and configurations are available upon request.

15.1 Waveguide Short Plate



【Specifications】

Model No*	Freq Range (GHz)	VSWR (Min)	Thickness (mm)	WG Type		Flange	Material
				IEC	EIA		
VT3WS...	0.32-0.49	60	23	R3	WR2300	FDP	Al
VT4WS...	0.35-0.53	60	23	R4	WR2100	FDP	Al
VT5WS...	0.41-0.62	60	18	R5	WR1800	FDP	Al
VT6WS...	0.49-0.75	60	18	R6	WR1500	FDP	Al
VT8WS...	0.64-0.98	60	14	R8	WR1150	FDP	Al
VT9WS...	0.75-1.15	60	14	R9	WR975	FDP	Al
VT12WS...	0.96-1.46	60	12	R12	WR770	FDP	Al
VT14WS...	1.13-1.73	60	12	R14	WR650	FDP	Al
VT18WS...	1.45-2.20	60	12	R18	WR510	FDP	Al/Cu
VT22WS...	1.72-2.61	60	10	R22	WR430	FDP	Al/Cu
VT26WS...	2.17-3.30	60	10	R26	WR340	FDP	Al/Cu
VT32WS...	2.60-3.95	60	8	R32	WR284	FDP	Al/Cu
VT40WS...	3.22-4.90	60	8	R40	WR229	FDP	Al/Cu
VT48WS...	3.94-5.99	60	7	R48	WR187	FDP	Al/Cu
VT58WS...	4.64-7.05	60	7	R58	WR159	FDP	Al/Cu

15

Waveguide
Short



Vector Telecom Pty Ltd

Website: www.vectortele.com

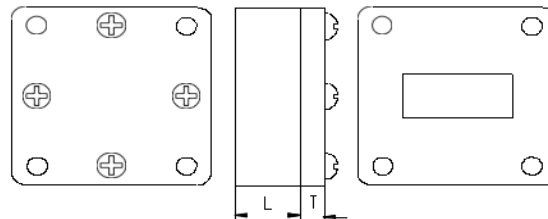
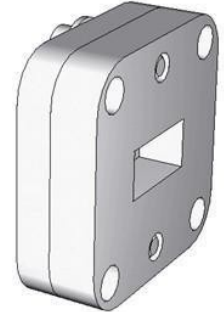
Email: sales@vectortele.com

Model No*	Freq Range (GHz)	VSWR (Min)	Thickness (mm)	WG Type		Flange	Material
				IEC	EIA		
VT70WS...	5.38-8.17	60	7	R70	WR137	FDP	Al/Cu
VT84WS...	6.57-9.99	60	5	R84	WR112	FBP	Al/Cu
VT100WS...	8.20-12.40	60	5	R100	WR90	FBP	Al/Cu
VT120WS...	9.84-15.0	60	5	R120	WR75	FBP	Al/Cu
VT140WS...	11.9-18.0	60	5	R140	WR62	FBP	Al/Cu
VT180WS...	14.5-22.0	60	5	R180	WR51	FBP	Al/Cu
VT220WS...	17.6-26.7	60	4	R220	WR42	FBP	Al/Cu
VT260WS...	21.7-33.0	60	4	R260	WR34	FBP	Al/Cu
VT320WS...	26.3-40.0	60	4	R320	WR28	FBP	Al/Cu
VT400WS...	32.9-50.1	60	4	R400	WR22	FUGP	Cu
VT500WS...	39.2-59.6	60	4	R500	WR19	FUGP	Cu
VT620WS...	49.8-75.8	60	4	R620	WR15	FUGP	Cu
VT740WS...	60.5-91.9	60	4	R740	WR12	FUGP	Cu
VT900WS...	73.8-110	60	4	R900	WR10	FUGP	Cu

*Indicates Model Number. See Ordering Information for complete part number.

15.2 Waveguide Offset Short

Waveguide offset shorts are available on special order. These are designed to have a specific shorting distance as required.



【Specifications】

Model No*	WG Type EIA	Freq Range (GHz)	VSWR	Dimension (mm)		Flange	Material
				T	L		
VT3WOFS	WR2300	0.32-0.49	≥50	23	239.5	FDP	Al
VT4WOFS	WR2100	0.35-0.53	≥50	23	221.6	FDP	Al
VT5WOFS	WR1800	0.41-0.62	≥50	18	188.9	FDP	Al
VT6WOFS	WR1500	0.49-0.75	≥50	18	156.6	FDP	Al
VT8WOFS	WR1150	0.64-0.98	≥50	14	122.3	FDP	Al

15

Waveguide Short





Model No*	WG Type EIA	Freq Range (GHz)	VSWR	Dimension (mm)		Flange	Material
				T	L		
VT9WOFS	WR975	0.75-1.15	≥50	14	101.6	FDP	Al
VT12WOFS	WR770	0.96-1.46	≥50	12	81.1	FDP	Al
VT14WOFS	WR650	1.13-1.73	≥50	12	67.9	FDP	Al
VT18WOFS	WR510	1.45-2.20	≥50	12	53.2	FDP	Al
VT22WOFS	WR430	1.72-2.61	≥50	10	44.8	FDP	Al
VT26WOFS	WR340	2.17-3.30	≥50	10	35.5	FDP	Al
VT32WOFS	WR284	2.60-3.95	≥50	8	29.6	FDP	Al
VT40WOFS	WR229	3.22-4.90	≥50	8	23.9	FDP	Al
VT48WOFS	WR187	3.94-5.99	≥50	7	19.6	FDP	Al
VT58WOFS	WR159	4.64-7.05	≥50	7	16.6	FDP	Al
VT70WOFS	WR137	5.38-8.17	≥50	7	14.3	FDP	Cu
VT84WOFS	WR112	6.57-9.99	≥50	5	11.7	FBP	Cu
VT100WOFS	WR90	8.20-12.40	≥50	5	9.5	FBP	Cu
VT120WOFS	WR75	9.84-15.0	≥50	5	7.8	FBP	Cu
VT140WOFS	WR62	11.9-18.0	≥50	5	6.5	FBP	Cu
VT180WOFS	WR51	14.5-22.0	≥50	5	5.3	FBP	Cu
VT220WOFS	WR42	17.6-26.7	≥50	4	4.4	FBP	Cu
VT260WOFS	WR34	21.7-33.0	≥50	4	3.55	FBP	Cu
VT320WOFS	WR28	26.5-40.0	≥50	4	2.9	FBP	Cu
VT400WOFS	WR22	32.9-50.1	≥50	4	2.3	FUGP	Cu
VT500WOFS	WR19	39.2-59.6	≥50	4	1.97	FUGP	Cu
VT620WOFS	WR15	49.8-75.8	≥50	4	1.55	FUGP	Cu
VT740WOFS	WR12	60.5-91.9	≥50	4	1.3	FUGP	Cu
VT900WOFS	WR10	73.8-110	≥50	4	1.05	FUGP	Cu

*Indicates Model Number. See Ordering Information for complete part number.

15.3 Waveguide Sliding Short

Waveguide sliding shorts are available. Please consult sales engineer for more information.





【Specifications】

Model No*	WG Type EIA	Freq Range (GHz)	VSWR	Sliding Distance (mm)	Flange	Material
VT3WSS	WR2300	0.32-0.49	≥50	300	FDP	Al
VT4WSS	WR2100	0.35-0.53	≥50	240	FDP	Al
VT5WSS	WR1800	0.41-0.62	≥50	220	FDP	Al
VT6WSS	WR1500	0.49-0.75	≥50	180	FDP	Al
VT8WSS	WR1150	0.64-0.98	≥50	150	FDP	Al
VT9WSS	WR975	0.75-1.15	≥50	130	FDP	Al
VT12WSS	WR770	0.96-1.46	≥50	100	FDP	Al
VT14WSS	WR650	1.13-1.73	≥50	90	FDP	Al
VT18WSS	WR510	1.45-2.20	≥50	80	FDP	Al
VT22WSS	WR430	1.72-2.61	≥50	70	FDP	Al
VT26WSS	WR340	2.17-3.30	≥50	60	FDP	Al
VT32WSS	WR284	2.60-3.95	≥50	60	FDP	Al
VT40WSS	WR229	3.22-4.90	≥50	50	FDP	Al
VT48WSS	WR187	3.94-5.99	≥50	50	FDP	Al
VT58WSS	WR159	4.64-7.05	≥50	50	FDP	Al
VT70WSS	WR137	5.38-8.17	≥50	40	FDP	Cu
VT84WSS	WR112	6.57-9.99	≥50	40	FBP	Cu
VT100WSS	WR90	8.20-12.40	≥50	30	FBP	Cu
VT120WSS	WR75	9.84-15.0	≥50	30	FBP	Cu
VT140WSS	WR62	11.9-18.0	≥50	25	FBP	Cu
VT180WSS	WR51	14.5-22.0	≥50	20	FBP	Cu
VT220WSS	WR42	17.6-26.7	≥50	20	FBP	Cu
VT260WSS	WR34	21.7-33.0	≥50	10	FBP	Cu
VT320WSS	WR28	26.5-40.0	≥50	10	FBP	Cu
VT400WSS	WR22	32.9-50.1	≥50	10	FUGP	Cu
VT500WSS	WR19	39.2-59.6	≥50	10	FUGP	Cu
VT620WSS	WR15	49.8-75.8	≥50	10	FUGP	Cu
VT740WSS	WR12	60.5-91.9	≥50	10	FUGP	Cu
VT900WSS	WR10	73.8-110	≥50	10	FUGP	Cu

*Indicates Model Number. See Ordering Information for complete part number.

【Ordering Information】



Section 1

Waveguide Components

Example Part No: VT 100 WS A

Vector Telecom

WG Type: R100

100

WS

A

Material: A = Aluminum C = Copper

Product Type: Waveguide Short Plate

Code	Description
WS	Waveguide Short Plate
WOFS	Waveguide Offset Short
WSS	Waveguide Sliding Short

- Flange type: Multiple types available - see VT Flanges page
- Finish: Corrosion protection plus black top coat

15

Waveguide Short



Vector Telecom Pty Ltd

Website: www.vectortele.com

Email: sales@vectortele.com