




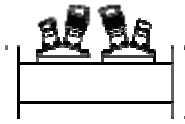


8.2 Waveguide Loop Coupler

Vector Telecom offers waveguide loop coupler within 20% waveguide bandwidth, the typical VSWR of main line is 1.10, and 20/25/30/35/40/45/50/60 dB, with compact structure and good sealing, it is widely applied to the microwave system under secondary line is 1.25, coupling selection is 12GHz.

8.2.1 Waveguide Loop Coupler



【Product Type】

Description	Loop Coupler	Dual Directional Loop Coupler		Four Directional Loop Coupler
Model	WHC...c	WHHC...c	WDHC...c	WDHHC...c
Outline Drawings				
WG Type	WR975-WR90	WR975- WR90	WR975- WR90	WR975- WR90
Working bandwidth	F0±10%	F0±10%	F0±10%	F0±10%
Optional Coupling...(dB)	20-60	20-60	20-60	20-60
Directivity (dB)	15	15	15	15
VSWR (Main Line)	1.10	1.10	1.10	1.10
VSWR (Secondary Line)	1.25	1.25	1.25	1.25
Connector	N or SMA	N or SMA	N or SMA	N or SMA

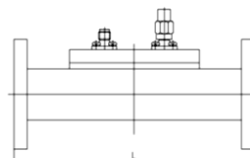
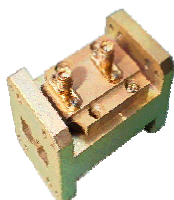
【WHC...c Specifications】

Model No*	WG Type	Freq Range (GHz)	Working Bandwidth (%)**	Optional Coupling. .. (dB)	Directivity (dB)	VSWR (Main Line)	VSWR (Sec. Line)	Flange	Connector	Length (mm)	Material
VT9WHCN	WR975	0.75-1.15	≤20	20-60	≥15	1.10	1.25	FDP	N Female	300	Al
VT12WHCN	WR770	0.96-1.46	≤20	20-60	≥15	1.10	1.25	FDP	N Female	200	Al
VT14WHCN	WR650	1.13-1.73	≤20	20-60	≥15	1.10	1.25	FDP	N Female	220	Al
VT18WHCN	WR510	1.45-2.20	≤20	20-60	≥15	1.10	1.25	FDP	N Female	210	Al

Model No*	WG Type	Freq Range (GHz)	Working Bandwidth (%)**	Optional Coupling.. (dB)	Directivity (dB)	VSWR (Main Line)	VSWR (Sec. Line)	Flange	Connector	Length (mm)	Material
VT22WHCN	WR430	1.72-2.61	≤20	20~60	≥15	1.10	1.25	FDP	N Female	160	Al
VT26WHCN	WR340	2.17-3.30	≤20	20~60	≥15	1.10	1.25	FDP	N Female	160	Al
VT32WHCN	WR284	2.60-3.95	≤20	20~60	≥15	1.10	1.25	FDP	N Female	150	Al
VT40WHCN	WR229	3.22-4.90	≤20	20~60	≥15	1.10	1.25	FDP	N Female	130	Al
VT48WHCN	WR187	3.94-5.99	≤20	20~60	≥15	1.10	1.25	FDP	N Female	130	Al
VT58WHCN	WR159	4.64-7.05	≤20	20~60	≥15	1.10	1.25	FDP	N Female	130	Al
VT70WHCN	WR137	5.38-8.17	≤20	20~60	≥15	1.10	1.25	FDP	N Female	130	Al
VT84WHCN	WR112	6.57-9.99	≤20	20~60	≥15	1.10	1.25	FBP	N Female	130	Cu
VT100WHC ...N	WR90	8.2-12.4	≤20	20~60	≥15	1.10	1.25	FBP	N Female	100	Cu

*Indicates Model Number. See Ordering Information for complete part number.

8.2.2 Double Ridged Waveguide Loop Couple



【DRWHC Series Specifications】

Model No*	WG Type	Freq Range (GHz)	Optional Coupling.. (dB)	Directivity (dB)	VSWR (Main Line)	VSWR (Sec. Line)	Flange	Connector	Length (mm)	Material
VT84DRWHCN	WRD84	0.84-2	20~60	≥15	≤1.15	≤1.60	FP	N Female	300	Al
VT150DRWHCN	WRD150	1.5-3.6	20~60	≥15	≤1.15	≤1.60	FP	N Female	200	Al
VT200DRWHCN	WRD200	2-4.8	20~60	≥15	≤1.15	≤1.60	FP	N Female	180	Al
VT250DRWHN	WRD250	2.6-7.8	20~60	≥15	≤1.15	≤1.60	FP	N Female	150	Al
VT350DRWHCN	WRD350	3.5-8.2	20~60	≥15	≤1.15	≤1.60	FP	N Female	120	Al
VT475DRWHCN	WRD475	4.75-11	20~60	≥10	≤1.15	≤1.80	FP	N Female	100	Al
VT500DRWHCN	WRD500	5-18	20~60	≥10	≤1.15	≤1.80	FP	N Female	100	Al
VT580DRWHCN	WRD580	5.8-16	20~60	≥10	≤1.15	≤1.80	FP	N Female	100	Al
VT650DRWHCN	WRD650	6.5-18	20~60	≥10	≤1.15	≤1.80	FP	N Female	100	Al
VT750DRWHCN	WRD750	7.5-18	20~60	≥10	≤1.15	≤1.80	FP	N Female	100	Al
VT700DRWHCN	WRD700	7-18.5	20~60	≥10	≤1.15	≤1.80	FP	N Female	100	Al
VT1100DRWHCN	WRD110	11-26.5	20~60	≥10	≤1.20	≤2.0	FP	SMA Female	80	Cu
VT1800DRWHCN	WRD180	18-40	20~60	≥10	≤1.20	≤2.0	FP	SMA Female	80	Cu

*indicates Model Number. See Ordering Information for complete part number.

08

Waveguide
Coupler



Vector Telecom Pty Ltd

Website: www.vectortele.com

Email: sales@vectortele.com