



## 13 Waveguide Circulator

Vector Telecom offers a standard product line of waveguide circulators ranging from WR10 to WR137. For more information feel free to call us and discuss your needs with one of our sales engineers.



### 13.1 Waveguide Circulator

#### 【Specifications】

Model No	Freq Range (GHz)	Working Bandwidth	VSWR (Max)	IL (dB) (Max)	Isolation (dB) (Min)	WG Type		Flange	Material
						IEC	EIA		
VT14WCIC	1.13-1.73	≤5%	1.20	0.3	20	R14	WR650	FDP	Al
VT18WCIC	1.45-2.20	≤5%	1.20	0.3	20	R18	WR510	FDP	Al
VT22WCIC	1.72-2.61	≤5%	1.20	0.3	20	R22	WR430	FDP	Al
VT26WCIC	2.17-3.30	≤5%	1.20	0.3	20	R26	WR340	FDP	Al
VT32WCIC	2.60-3.95	≤5%	1.20	0.3	20	R32	WR284	FDP	Al
VT40WCIC	3.22-4.90	≤10%	1.20	0.3	20	R40	WR229	FDP	Al
VT48WCIC	3.94-5.99	≤10%	1.20	0.3	20	R48	WR187	FDP	Al
VT58WCIC	4.64-7.05	≤10%	1.20	0.3	20	R58	WR159	FDP	Al
VT70WCIC	5.38-8.17	≤10%	1.20	0.3	20	R70	WR137	FDP	Al
VT84WCIC	6.57-9.99	≤15%	1.20	0.3	20	R84	WR112	FBP	Al
VT100WCIC	8.20-12.40	≤15%	1.20	0.3	20	R100	WR90	FBP	Al
VT120WCIC	9.84-15.0	≤15%	1.20	0.3	20	R120	WR75	FBP	Al
VT140WCIC	11.9-18.0	≤15%	1.20	0.3	20	R140	WR62	FBP	Al
VT180WCIC	14.5-22.0	≤15%	1.25	0.3	20	R180	WR51	FBP	Al
VT220WCIC	17.6-26.7	≤15%	1.25	0.3	20	R220	WR42	FBP	Cu
VT260WCIC	21.7-33.0	≤15%	1.25	0.3	20	R260	WR34	FBP	Cu
VT320WCIC	26.3-40.0	≤15%	1.25	0.4	20	R320	WR28	FBP	Cu
VT400WCIC	32.9-50.1	≤5%	1.35	0.6	17	R400	WR22	FUGP	Cu
VT500WCIC	39.2-59.6	≤5%	1.50	0.6	15	R500	WR19	FUGP	Cu
VT620WCIC	49.8-75.8	≤5%	1.50	0.6	15	R620	WR15	FUGP	Cu
VT740WCIC	60.5-91.9	≤5%	1.50	0.8	15	R740	WR12	FUGP	Cu
VT900WCIC	73.8-110	≤5%	1.50	1.0	15	R900	WR10	FUGP	Cu

\*Indicates Model Number. See Ordering Information for complete part number.

## 【Ordering Information】

**Example Part No:** VT 100 WCIC P M A  
 Vector Telecom ———  
 WG Type: R100 ———  
 Product Type: WG Circulator ———  
 Material: A=Aluminum C=Copper  
 Flange 2 Type: M=FBM100  
 Flange 1 Type: P=FBP100

- Flange type: Multiple types available - see VT Flanges page
- Finish: Corrosion protection plus black top coat

## 13.2 High Power Waveguide Circulator



## 【Specifications】

Model No*	WG Type EIA	Freq Range (GHz)	Working Bandwidth	VSWR	IL (dB)	Isolation (dB)	Avg Power (W)	Flange	Material
VT14WHPCIC20K	WR650	1.13-1.73	≤5%	≤1.2	≤0.3	≥20	20K	FDP	Al
VT18WHPCIC1000	WR510	1.45-2.20	≤5%	≤1.2	≤0.3	≥20	1000	FDP	Al
VT22WHPCIC1000	WR430	2.2-2.55	≤5%	≤1.2	≤0.3	≥20	1000	FDP	Al
VT26WHPCIC1000	WR340	2.17-3.3	≤5%	≤1.2	≤0.3	≥20	1000	FDP	Al
VT32WHPCIC1000	WR284	2.60-3.95	≤5%	≤1.2	≤0.3	≥20	1000	FDP	Al
VT48WHPCIC1000	WR187	3.94-5.99	≤10%	≤1.2	≤0.3	≥20	1000	FDP	Al
VT58WHPCIC1000	WR159	4.64-7.05	≤10%	≤1.2	≤0.3	≥20	1000	FDP	Al
VT70WHPCIC400	WR137	5.38-8.17	≤10%	≤1.2	≤0.3	≥20	400	FDP	Al
VT84WHPCIC400	WR112	6.57-9.99	≤10%	≤1.2	≤0.3	≥20	400	FBP	Al
VT100WHPCIC300	WR90	8.2-12.4	≤15%	≤1.2	≤0.3	≥20	300	FBP	Al
VT120WHPCIC100	WR75	9.84-15.0	≤15%	≤1.2	≤0.3	≥20	100	FBP	Al
VT140WHPCIC150	WR62	11.9-18.0	≤15%	≤1.2	≤0.3	≥20	150	FBP	Al
VT180WHPCIC100	WR51	14.5-22.0	≤15%	≤1.25	≤0.3	≥20	100	FBP	Al
VT220WHPCIC80	WR42	17.6-26.7	≤15%	≤1.25	≤0.3	≥20	80	FBP	Cu
VT260WHPCIC40	WR34	21.7-33.0	≤15%	≤1.25	≤0.3	≥20	80	FBP	Cu
VT320WHPCIC40	WR28	26.5-40	≤15%	≤1.25	≤0.3	≥20	50	FBP	Cu
VT400WHPCIC3	WR22	32.9-50.1	≤5%	≤1.25	≤0.5	≥20	3	FUGP	Cu

\*Indicates Model Number. See Ordering Information for complete part number.

# 13

## Waveguide Circulator



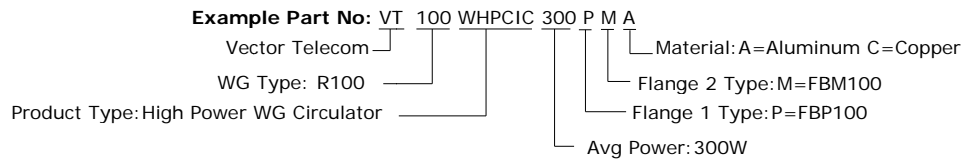
Vector Telecom Pty Ltd

Website: [www.vectortele.com](http://www.vectortele.com)

Email: [sales@vectortele.com](mailto:sales@vectortele.com)

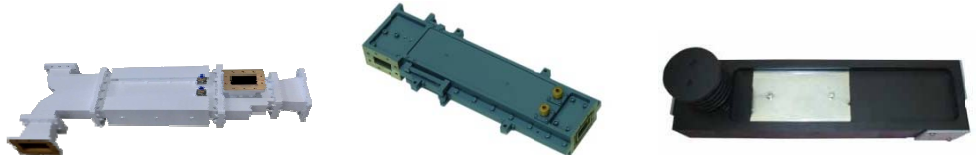


### 【Ordering Information】



- Flange type: Multiple types available - see VT Flanges page
- Finish: Corrosion protection plus black top coat

### 13.3 High Power Waveguide Differential Phase Shift Circulator

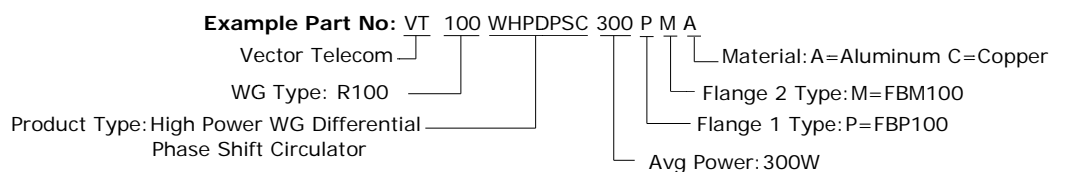


### 【Specifications】

Model No*	WG Type EIA	Freq Range (GHz)	Working Bandwidth	VSWR	IL (dB)	Isolation (dB)	Avg Power (W)	Flange	Material
VT14WHPDPSI40KW	WR650	1.13-1.73	≤5%	≤1.2	≤0.3	≥20	40k	FDP	Al
VT18WHPDPSI30KW	WR510	1.45-2.20	≤5%	≤1.2	≤0.3	≥20	30k	FDP	Al
VT22WHPDPSI20KW	WR430	1.72-2.61	≤5%	≤1.2	≤0.3	≥20	20k	FDP	Al
VT26WHPDPSI20KW	WR340	2.17-3.30	≤5%	≤1.2	≤0.3	≥20	20k	FDP	Al
VT32WHPDPSI10KW	WR284	2.60-3.95	≤5%	≤1.2	≤0.4	≥20	10k	FDP	Al
VT40WHPDPSI5KW	WR229	3.22-4.90	≤5%	≤1.2	≤0.4	≥20	5k	FDP	Al
VT48WHPDPSI8KW	WR187	3.94-5.99	≤5%	≤1.2	≤0.4	≥20	8k	FDP	Al
VT84WHPDPSI1200W	WR112	6.57-9.99	≤7%	≤1.25	≤0.4	≥20	1.2k	FBP	Cu
VT100WHPDPSI1000W	WR90	8.2-12.5	≤7%	≤1.25	≤0.5	≥20	1k	FBP	Cu
VT120WHPDPSI1000W	WR75	9.84-15.0	≤7%	≤1.25	≤0.5	≥20	1k	FBP	Cu
VT140WHPDPSI800W	WR62	11.9-18.0	≤7%	≤1.25	≤0.5	≥20	800	FBP	Cu
VT180WHPDPSI800W	WR51	14.5-22.0	≤7%	≤1.25	≤0.5	≥20	800	FBP	Cu

\*Indicates Model Number. See Ordering Information for complete part number.

### 【Ordering Information】



- Flange type: Multiple types available - see VT Flanges page
- Finish: Corrosion protection plus black top coat