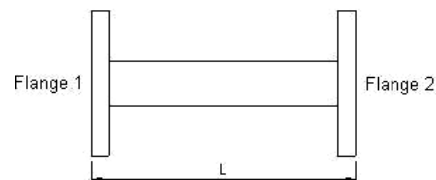
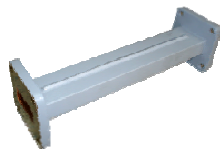


11 Waveguide Attenuator

Vector Telecom offers a series of rectangular waveguide attenuators. Typical Attenuation values are 3dB, 6dB, 10dB, 20dB and 30dB (other attenuation values available, consult sales engineers for details). The assembly construction includes a precision element for optimum electrical performance, but note that Attenuation vs. Frequency can vary greatly depending on the attenuation at a given frequency. Waveguide Fixed Attenuators with normal and high power units are also available. For more information feel free to call us and discuss your needs with one of our sales engineers.

11.1 Waveguide Fixed Attenuator



【Specifications】

Model No*	Freq Range (GHz)	VSWR (Max)	Power (W)	Attenuation** (dB)	WG Type		Flange	Material
					IEC	EIA		
VT3WFA...	0.32-0.49	1.25	2	3/6/10/20/30	R3	WR2300	FDP	Al
VT4WFA...	0.35-0.53	1.25	2	3/6/10/20/30	R4	WR2100	FDP	Al
VT5WFA...	0.41-0.62	1.25	2	3/6/10/20/30	R5	WR1800	FDP	Al
VT6WFA...	0.49-0.75	1.25	2	3/6/10/20/30	R6	WR1500	FDP	Al
VT8WFA...	0.64-0.98	1.25	2	3/6/10/20/30	R8	WR1150	FDP	Al
VT9WFA...	0.75-1.15	1.25	2	3/6/10/20/30	R9	WR975	FDP	Al
VT12WFA...	0.96-1.46	1.25	2	3/6/10/20/30	R12	WR770	FDP	Al
VT14WFA...	1.13-1.73	1.25	2	3/6/10/20/30	R14	WR650	FDP	Al
VT18WFA...	1.45-2.20	1.25	2	3/6/10/20/30	R18	WR510	FDP	Al
VT22WFA...	1.72-2.61	1.25	2	3/6/10/20/30	R22	WR430	FDP	Al
VT26WFA...	2.17-3.30	1.25	2	3/6/10/20/30	R26	WR340	FDP	Al
VT32WFA...	2.60-3.95	1.25	2	3/6/10/20/30	R32	WR284	FDP	Al
VT40WFA...	3.22-4.90	1.25	2	3/6/10/20/30	R40	WR229	FDP	Al
VT48WFA...	3.94-5.99	1.25	2	3/6/10/20/30	R48	WR187	FDP	Al
VT58WFA...	4.64-7.05	1.25	2	3/6/10/20/30	R58	WR159	FDP	Al

11

Waveguide Attenuator



Vector Telecom Pty Ltd

Website: www.vectortele.com

Email: sales@vectortele.com

11

Waveguide Attenuator

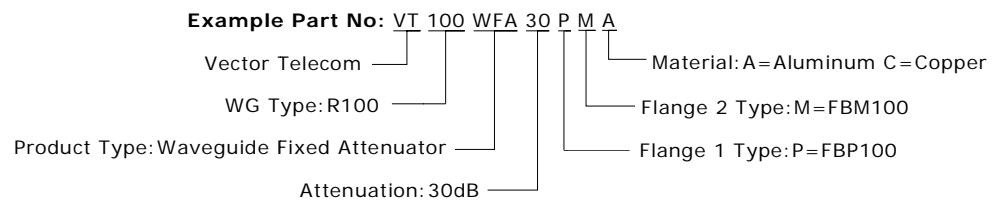


Model No*	Freq Range (GHz)	VSWR (Max)	Power (W)	Attenuation** (dB)	WG Type		Flange	Material
					IEC	EIA		
VT70WFA...	5.38-8.17	1.25	2	3/6/10/20/30	R70	WR137	FDP	Cu
VT84WFA...	6.57-9.99	1.25	2	3/6/10/20/30	R84	WR112	FBP	Cu
VT100WFA...	8.20-12.40	1.25	2	3/6/10/20/30	R100	WR90	FBP	Cu
VT120WFA...	9.84-15.0	1.25	2	3/6/10/20/30	R120	WR75	FBP	Cu
VT140WFA...	11.9-18.0	1.25	2	3/6/10/20/30	R140	WR62	FBP	Cu
VT180WFA...	14.5-22.0	1.25	2	3/6/10/20/30	R180	WR51	FBP	Cu
VT220WFA...	17.6-26.7	1.25	2	3/6/10/20/30	R220	WR42	FBP	Cu
VT260WFA...	21.7-33.0	1.25	2	3/6/10/20/30	R260	WR34	FBP	Cu
VT320WFA...	26.5-40.0	1.25	2	3/6/10/20/30	R320	WR28	FBP	Cu
VT400WFA...	32.9-50.1	1.30	2	3/6/10/20/30	R400	WR22	FUGP	Cu
VT500WFA...	39.2-59.6	1.30	2	3/6/10/20/30	R500	WR19	FUGP	Cu
VT620WFA...	49.8-75.8	1.30	2	3/6/10/20/30	R620	WR15	FUGP	Cu
VT740WFA...	60.5-91.9	1.35	2	3/6/10/20/30	R740	WR12	FUGP	Cu
VT900WFA...	73.8-110	1.35	2	3/6/10/20/30	R900	WR10	FUGP	Cu

*Indicates Model Number. See Ordering Information for complete part number

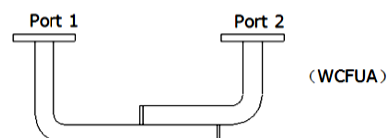
** Nominal Attenuation Accuracy: $\pm 0.5\text{dB}$ Frequency Sensitivity: $\pm 0.7\text{dB}$

【Ordering Information】



- Flange type: Multiple types available - see VT Flanges page
- Finish: Corrosion protection plus black top coat

11.2 Waveguide Coupling Fixed Attenuators





【Specifications】

Model No*	WG Type EIA	Freq Range (GHz)	VSWR (Max)	Optional Attenuation (dB)	Frequency Response (dB)	Flange	Material
VT12WCFAX	WR770	0.96-1.46	≤1.20	3-60	±0.5~1.8	FDP	Al
VT12WCFUAX	WR770	0.96-1.46	≤1.20	3-60	±0.5~1.8	FDP	Al
VT14WCFAX	WR650	1.13-1.73	≤1.20	3-60	±0.5~1.8	FDP	Al
VT14WCFUAX	WR650	1.13-1.73	≤1.20	3-60	±0.5~1.8	FDP	Al
VT18WCFAX	WR510	1.45-2.20	≤1.20	3-60	±0.5~1.8	FDP	Al
VT18WCFUAX	WR510	1.45-2.20	≤1.20	3-60	±0.5~1.8	FDP	Al
VT22WCFAX	WR430	1.72-2.61	≤1.20	3-60	±0.5~1.8	FDP	Al
VT22WCFUAX	WR430	1.72-2.61	≤1.20	3-60	±0.5~1.8	FDP	Al
VT26WCFAX	WR340	2.17-3.30	≤1.20	3-60	±0.5~1.8	FDP	Al
VT26WCFUAX	WR340	2.17-3.30	≤1.20	3-60	±0.5~1.8	FDP	Al
VT32WCFAX	WR284	2.60-3.95	≤1.20	3-60	±0.5~1.8	FDP	Al
VT32WCFUAX	WR284	2.60-3.95	≤1.20	3-60	±0.5~1.8	FDP	Al
VT40WCFAX	WR229	3.22-4.90	≤1.20	3-60	±0.5~1.8	FDP	Al
VT40WCFUAX	WR229	3.22-4.90	≤1.20	3-60	±0.5~1.8	FDP	Al
VT48WCFAX	WR187	3.94-5.99	≤1.20	3-60	±0.5~1.8	FDP	Al
VT48WCFUAX	WR187	3.94-5.99	≤1.20	3-60	±0.5~1.8	FDP	Al
VT58WCFAX	WR159	4.64-7.05	≤1.20	3-60	±0.5~1.8	FDP	Al
VT58WCFUAX	WR159	4.64-7.05	≤1.20	3-60	±0.5~1.8	FDP	Al
VT70WCFAX	WR137	5.38-8.17	≤1.20	3-60	±0.5~1.8	FDP	Cu
VT70WCFUAX	WR137	5.38-8.17	≤1.20	3-60	±0.5~1.8	FDP	Cu
VT84WCFAX	WR112	6.57-9.99	≤1.20	3-60	±0.5~1.8	FDP	Cu
VT84WCFUAX	WR112	6.57-9.99	≤1.20	3-60	±0.5~1.8	FDP	Cu
VT100WCFAX	WR90	8.20-12.40	≤1.20	3-60	±0.5~1.8	FDP	Cu
VT100WCFUAX	WR90	8.20-12.40	≤1.20	3-60	±0.5~1.8	FDP	Cu
VT120WCFAX	WR75	9.84-15.0	≤1.20	3-60	±0.5~1.8	FDP	Cu
VT120WCFUAX	WR75	9.84-15.0	≤1.20	3-60	±0.5~1.8	FDP	Cu
VT140WCFAX	WR62	11.9-18.0	≤1.20	3-60	±0.5~1.8	FDP	Cu
VT140WCFUAX	WR62	11.9-18.0	≤1.20	3-60	±0.5~1.8	FDP	Cu
VT180WCFAX	WR51	14.5-22.0	≤1.20	3-60	±0.5~1.8	FDP	Cu
VT180WCFUAX	WR51	14.5-22.0	≤1.20	3-60	±0.5~1.8	FDP	Cu
VT220WCFAX	WR42	17.6-26.7	≤1.20	3-60	±0.5~1.8	FDP	Cu
VT220WCFUAX	WR42	17.6-26.7	≤1.20	3-60	±0.5~1.8	FDP	Cu
VT260WCFAX	WR34	21.7-33.0	≤1.20	3-60	±0.5~1.8	FDP	Cu
VT260WCFUAX	WR34	21.7-33.0	≤1.20	3-60	±0.5~1.8	FDP	Cu
VT320WCFAX	WR28	26.5-40.0	≤1.20	3-60	±0.5~1.8	FDP	Cu
VT320WCFUAX	WR28	26.5-40.0	≤1.20	3-60	±0.5~1.8	FDP	Cu

11

Waveguide Attenuator



Vector Telecom Pty Ltd

Website: www.vectortele.com

Email: sales@vectortele.com

Model No*	WG Type EIA	Freq Range (GHz)	VSWR (Max)	Optional Attenuation (dB)	Frequency Response (dB)	Flange	Material
VT400WCFAX	WR22	32.9-50.1	≤1.20	3-60	±0.5~1.8	FUGP	Cu
VT400WCFUAX	WR22	32.9-50.1	≤1.20	3-60	±0.5~1.8	FUGP	Cu
VT500WCFAX	WR19	39.2-59.6	≤1.25	3-60	±0.5~1.8	FUGP	Cu
VT500WCFUAX	WR19	39.2-59.6	≤1.25	3-60	±0.5~1.8	FUGP	Cu
VT620WCFAX	WR15	49.8-75.8	≤1.25	3-60	±0.5~1.8	FUGP	Cu
VT620WCFUAX	WR15	49.8-75.8	≤1.25	3-60	±0.5~1.8	FUGP	Cu
VT740WCFAX	WR12	60.5-91.9	≤1.25	3-60	±0.5~1.8	FUGP	Cu
VT740WCFUAX	WR12	60.5-91.9	≤1.25	3-60	±0.5~1.8	FUGP	Cu
VT900WCFAX	WR10	73.8-110	≤1.25	3-60	±0.5~1.8	FUGP	Cu
VT900WCFUAX	WR10	73.8-110	≤1.25	3-60	±0.5~1.8	FUGP	Cu

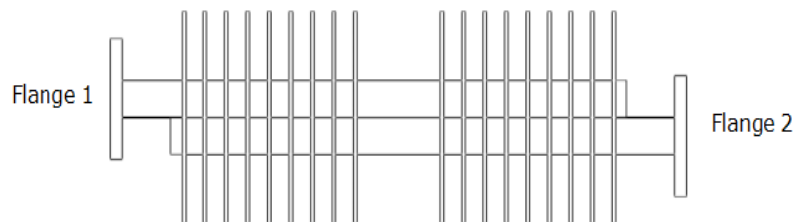
*Indicates Model Number. See Ordering Information for complete part number.

【Ordering Information】

Example Part No: VT 100 WCFA 30 P M A
 Vector Telecom | Material: A=Aluminum C=Copper
 WG Type: R100 | Flange 2 Type: M=FBM100
 Product Type: WG Coupling Fixed Attenuators | Flange 1 Type: P=FBP100
 Attenuation: 30dB

- Flange type: Multiple types available - see VT Flanges page
- Finish: Corrosion protection plus black top coat

11.3 High Power Waveguide Coupling Fixed Attenuators



【Specifications】

Model No*	Freq Range (GHz)	VSWR (Max)	Avg Power Range (W)	Optional Attenuation (dB)	WG Type		Flange	Material
					IEC	EIA		
VT40WHPCA...	3.22-4.90	1.20	10-4000	3-60	R40	WR229	FDP	Al
VT48WHPFA...	5.4-5.9	1.25	10-4000	3-60	R48	WR187	FDP	Al
VT70WHPFA...	5.85-7.025	1.20	10-4000	3-60	R70	WR137	FDP	Al

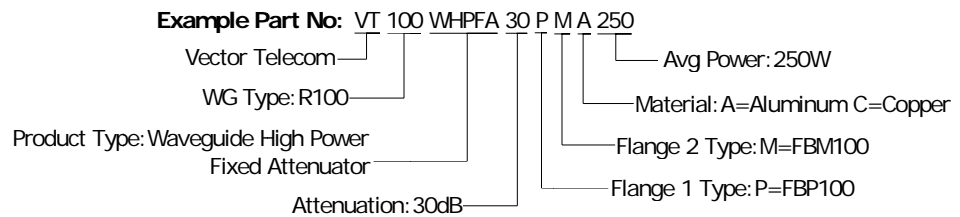


Model No*	Freq Range (GHz)	VSWR (Max)	Avg Power Range (W)	Optional Attenuation (dB)	WG Type		Flange	Material
					IEC	EIA		
VT100WHPFA...	8.5-9.6	1.10	10-3000	3-60	R100	WR90	FDP	Cu
VT120WHPFA...	9.84-15.0	1.15	10-3000	3-60	R120	WR75	FBP	Cu
VT100WHPFA...	8.5-9.6	1.10	10-3000	3-60	R100	WR90	FDP	Cu
VT120WHPFA...	9.84-15.0	1.15	10-3000	3-60	R120	WR75	FBP	Cu
VT140WHPFA...	14.5-15.5	1.25	10-3000	3-60	R140	WR62	FBP	Cu
VT320WHPFA...	26.3-40.0	1.25	10-3000	3-60	R320	WR28	FBP	Cu
VT400WHPCFA...	32.9-50.1	1.20	10-1000	3-60	R400	WR22	FBP	Cu
VT500WHPCFA...	39.2-59.6	1.25	10-1000	3-60	R500	WR19	FBP	Cu
VT620WHPCFA...	49.8-75.8	1.25	10-600	3-60	R620	WR15	FBP	Cu
VT740WHPCFA...	60.5-91.9	1.25	10-600	3-60	R740	WR12	FBP	Cu
VT900WHPCFA...	73.8-110	1.25	10-600	3-60	R900	WR10	FBP	Cu

*Indicates Model Number. See Ordering Information for complete part number.

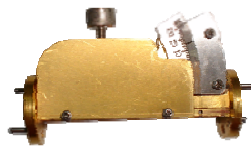
** Nominal Attenuation Accuracy: $\pm 0.5\text{dB}$ Frequency Sensitivity: $\pm 0.7\text{dB}$

【Ordering Information】



- Flange type: Multiple types available - see VT Flanges page
- Finish: Corrosion protection plus black top coat

11.4 Waveguide Variable Attenuator



【Specifications】

Model No*	WG Type EIA	Freq Range (GHz)	VSWR (Max)	Optional Attenuation (dB)	Flange	Material
VT12WVA30	WR770	0.96-1.46	≤ 1.25	0~30	FDP	Al
VT14WVA30	WR650	1.13-1.73	≤ 1.25	0~30	FDP	Al
VT18WVA30	WR510	1.45-2.20	≤ 1.25	0~30	FDP	Al
VT22WVA30	WR430	1.72-2.61	≤ 1.25	0~30	FDP	Al
VT26WVA30	WR340	2.17-3.30	≤ 1.25	0~30	FDP	Al