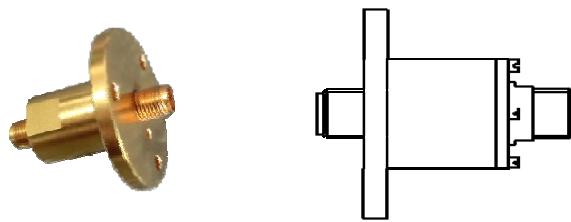




25 Coaxial Rotary Joint



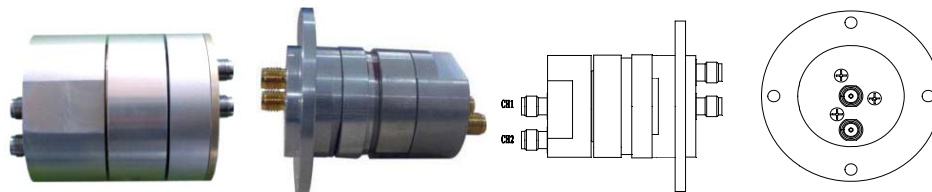
25.1 Single Channel Coaxial Rotary Joint

【Specification】

Model No*	Freq Range (GHz)	VSWR	VSWR WOW (dB)	IL (dB)	IL WOW (dB)	Avg Power (W)	Peak Power (W)	Connector Type	
								Port 1	Port 2
VT30CRJINJK	DC-3	≤1.2	≤0.1	≤0.5	≤0.05	30	300	N Male	N Female
VT80CRJINJK	DC-8	≤1.35	≤0.1	≤0.5	≤0.05	30	300	N Male	N Female
VT124CRJINJK	DC-12.4	≤1.5	≤0.1	≤0.5	≤0.05	30	300	N Male	N Female
VT124CRJISJK	DC-12.4	≤1.5	≤0.1	≤0.5	≤0.05	30	300	SMA Male	SMA Female
VT100150CRJISJK	10-15	≤1.5	≤0.1	≤0.5	≤0.1	30	300	SMA Male	SMA Female
VT180CRJINJK	DC-18	≤1.8	≤0.1	≤0.8	≤0.1	30	300	N Male	N Female
VT180CRJISJK	DC-18	≤1.8	≤0.1	≤0.8	≤0.1	30	300	SMA Male	SMA Female
VT400CRJIV	DC-40	≤1.8	≤0.1	≤0.8	≤0.1	30	300	2.4 Female	2.4 Female

*Indicates Model Number. See Ordering Information for complete part number.

25.2 Dual Channels Coaxial Rotary Joint (II Type)



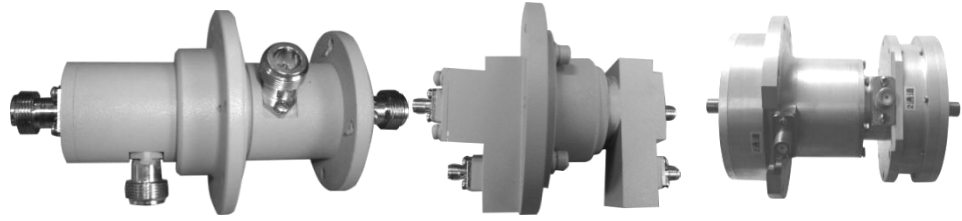
【Specification】

Model No*	Freq Range (GHz)	VSWR	VSWR WOW (dB)	IL(dB)	IL WOW (dB)	Avg Power (W)	Channel Isolation (dB)	Connect Type
VT0030CRJIISA	CH1: 0-3	≤1.25	≤0.10	≤0.3	≤0.05	10	≥60	SMA Female
	CH2: 0-3	≤1.35	≤0.10	≤0.3	≤0.1	10		
VT0050CRJIIS	CH1: 0-5	≤1.20	≤0.05	≤0.3	≤0.05	50W	≥50	SMA Female

*Indicates Model Number. See Ordering Information for complete part number.



25.3 Dual Channels Coaxial Rotary Joint (UI Type)

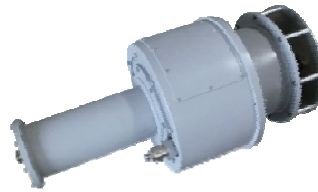


【Specification】

Model No*	Freq Range (GHz)	VSWR	IL	Connector Type	Material
VT0045CRJIISAT	CH1: 0-4.5	1.2	0.25	SMA Female	Al
	CH2: 0-4.5	1.45	0.3		
VT12CRJUIS1	CH1: 0.95-1.45	1.25	0.5	SMA Female	Cu
	CH2: 0.95-1.45	1.50	0.5		
VT4070CRJUIS	CH1: 3.6-4.2	1.30	0.3	SMA Female	Cu
	CH2: 5.85-6.45	1.30	0.3		
VT160110CRJIISA	CH1: DC-16	1.5	0.5	SMA Female	Al
	CH2: DC-11	2.5	2		
VT94CRJUIS	CH1: 9.4±0.25GHz	1.3	0.4	SMA Female	Cu
	CH1: 9.4±0.25GHz	1.3	0.4		

25.4 Multiple Channels Coaxial Rotary Joint

Model No*: VT11CHPRJUII3



【Specification】

Channel	Freq Range (GHz)	VSWR	VSWR WOW (dB)	IL	IL WOW (dB)	Avg Power (KW)	Peak Power (KW)	Connector
CH1	0.13-0.19	≤1.3	≤0.1	≤0.1dB	≤0.1dB	3.6	30	1'5/8 Female
CH2	1-1.1			≤0.2dB		0.05	5	L27 Female
CH3	1-1.1			≤0.2dB		0.05	5	L27 Female

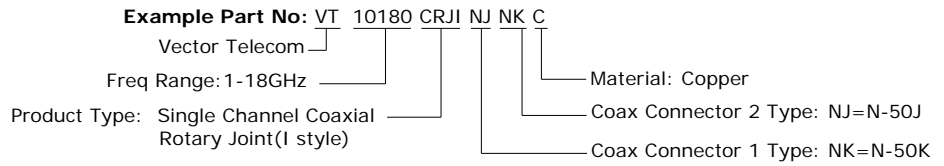
*Indicates Model Number. See Ordering Information for complete part number.



Section 2

**Coaxial
Components**

【Ordering Information】



Code	Description	Code	Description
CRJI	Single Channel Coaxial Rotary Joint	CHPRJUJ	Multiple Channels Coaxial Rotary Joint
CRJII	Dual Channel Coaxial Rotary Joint (II Type)	CRJUI	Dual Channel Coaxial Rotary Joint (UI Type)

25

**Coaxial
Rotary Joint**



Vector Telecom Pty Ltd

Website: www.vectortele.com

Email: sales@vectortele.com